



SOCIAL IMPACT WITH INNOVATION

ASIAN INSTITUTE OF TECHNOLOGY

Dr. Eden Woon

President, AIT

25 March 2019





Foreword

AIT has built up a reputation in 60 years as a postgraduate Institute committed to achieving social impact through capacity building education and research.

The institute also acts as a bridge connecting its research to a vast network of policy makers, government officials, and NGOs. Hence, the story of AIT is different from that of many traditional research universities.

Today, AIT is faced with the challenge of how to make its core strength work even more relevant to the changing needs of society — by using fast moving leading-edge technologies, and becoming more entrepreneurial and more global, while all the time with limited resources.

AIT and Its Aims

1

Being a small-sized international English-speaking postgraduate institution focusing on Engineering, Environment and Management.

2

Continuing to fulfill social impact and capacity building roles, and to produce more engineers, researchers, faculty, government officials and policy makers both in public and private sectors, to cope with the changing needs of the region.

3

Injecting more innovation by applying leading edge technologies such as big data and artificial intelligence and robotics to existing wide-social-impact research areas

4

Enhancing the institute's capability to impact socio-economic development and nurturing entrepreneurial thinking, through hands-on knowledge transfer and start-ups..



Alumni Network

- Former Ministry of Foreign Affairs, Thailand
- Former Governor, Central Bank, Thailand
- Chairman of Advisory Board, Bangkok Mass Transit System Public Company Limited, Thailand
- Member of Parliament, Bhutan
- Governor of Education, Daegu Metropolitan City, Korea
- Rector, International University Ho Chi Minh City, Vietnam
- Vice President, Software Development, Oracle Corporation, USA
- Managing Director, DHL, Hong Kong

Our Partners

- Asian Development Bank
 - Bangchak Petroleum Public Company Limited
 - Bill and Melinda Gates Foundation
 - British Council
 - European Union
 - ERASMUS+
 - International Development Research Centre
 - Japan Aerospace Exploration Agency
 - Metropolitan Electricity Authority of Thailand
 - Ministry of Agriculture and Cooperatives of Thailand
 - National Science and Technology Development Agency (NSTDA)
 - Siam Cement Group Public Company Limited
 - United Nations Environment Programme (UNEP)
 - United States Agency for International Development
- and more ...



Collaboration: NSTDA & AIT

Selected NSTDA research staff appointed as AIT adjunct faculty.

Joint research collaboration between AIT faculty and NSTDA laboratories

AIT research projects funded by NSTDA

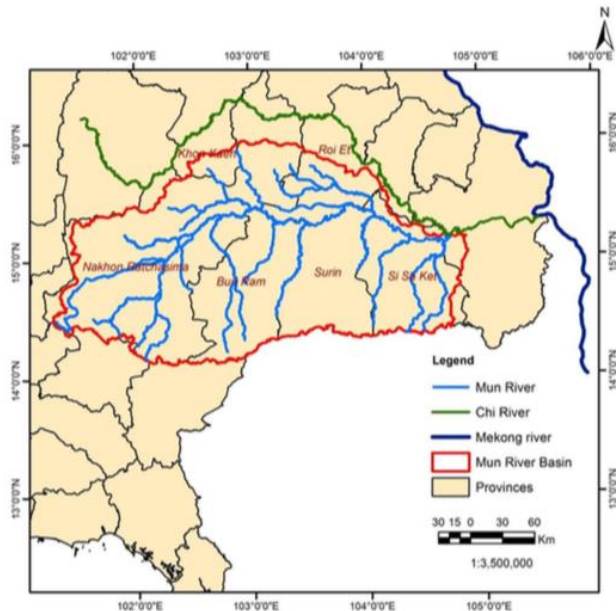
NSTDA-AIT collaboration on the development of Eastern Economic Corridor of Innovation (EECI)

AIT student interns and post-doctoral fellows at NSTDA



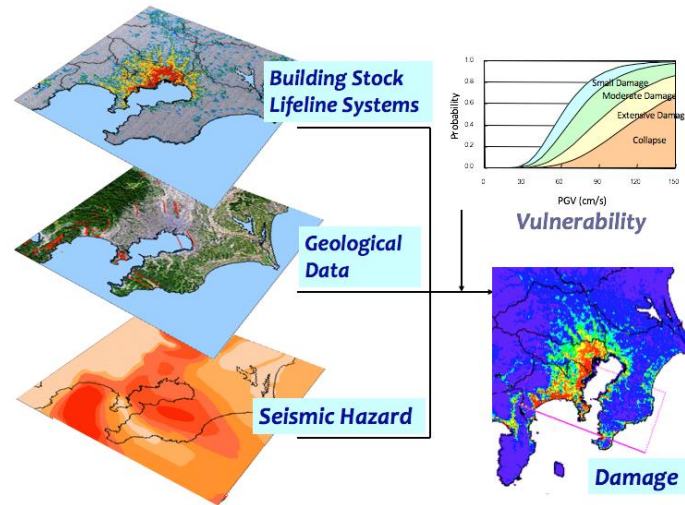
Research for Policy Makers

Enhancing Resilience to Future Hydro-meteorological Extremes in the Mun River Basin in Northeast of Thailand



Funded by Thailand Research Fund and Natural Environment Research Council, and collaborated with University of Exeter, UK

Seismic Hazard and Risk Assessment of Nine Cities in Bangladesh



Funded by Asian Disaster Preparedness Center

Technology Needs Assessment



Funded by UNEP

Research for Society

Anaerobic Digester with Centralized Monitoring System



Funded by British Council and partnered with Loughborough University, UK

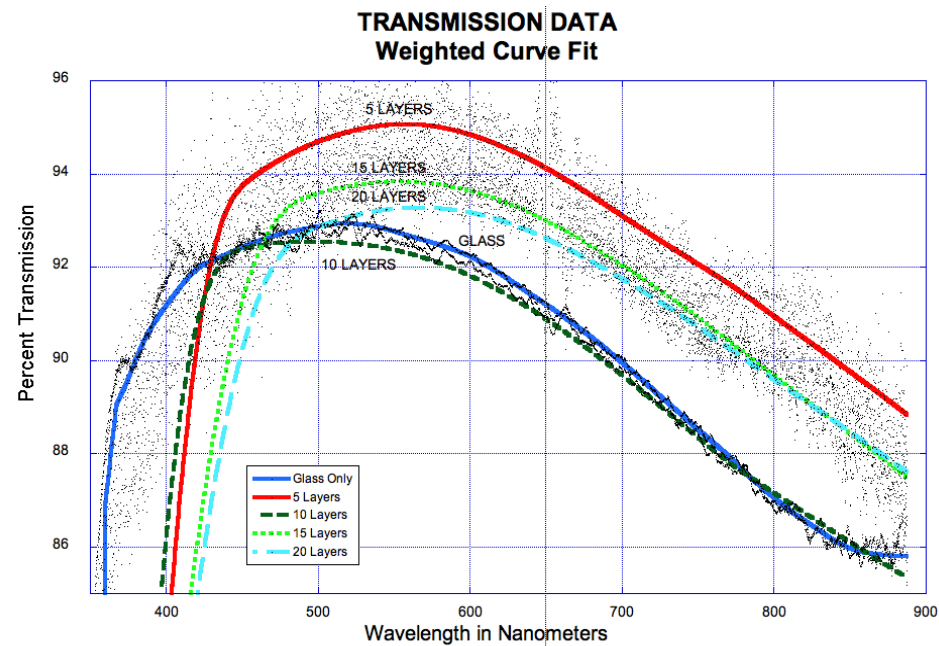
Sustainable Decentralized Wastewater Management Systems and Technology Transfer



Funded by Bill and Melinda Gates Foundation, USA

Research for Technology Development

Simulation and Nanotechnology to enhance selected solar cell materials



Funded by NEON Infotech South East Asia, Thailand

TV White Space

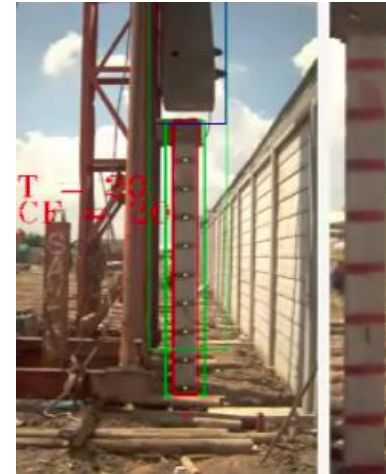


Funded by National Broadcasting and Telecommunication Commission (NBTC), Thailand

Social Impact with Innovation



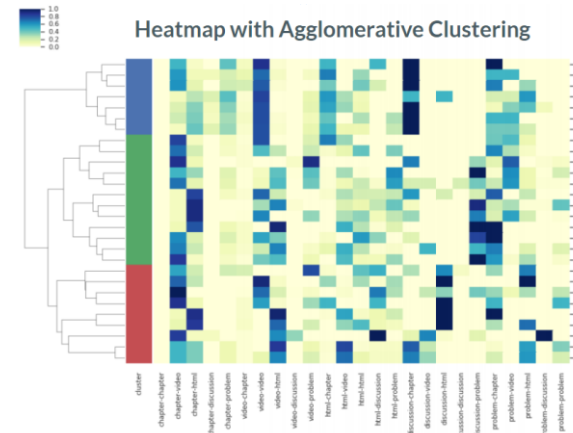
Automatic Rice Weed Management Robot



Smart Blow count System



Developing GIS plugins for estimating sugar cane yield



Thai MOOC Learning Analytics

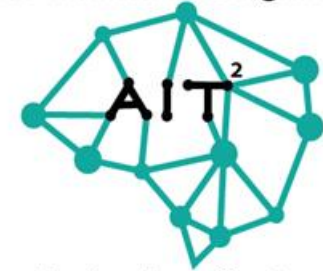
Outreach Centers



ACISAI

Asian Center of Innovation for
Sustainable Agriculture Intensification

AIT Artificial Intelligence



Technology Center



AIT Extension

Executive & Professional Education



interERLab

INTERNET EDUCATION AND RESEARCH LABORATORY



Workshops & Trainings

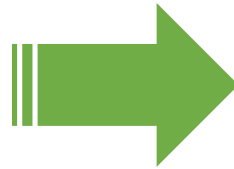
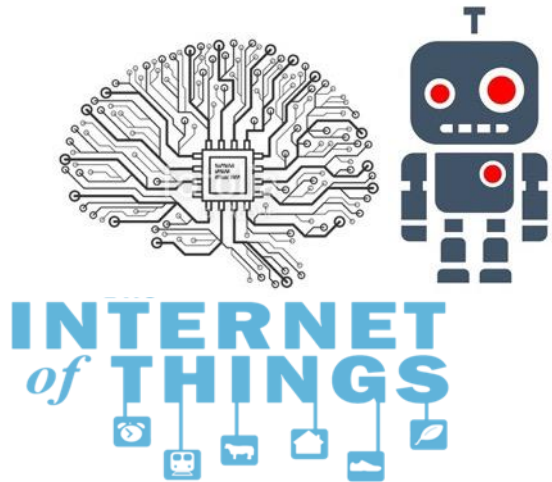
Workshops

- ❖ Asia Conference on Earthquake Engineering
- ❖ Recent Advances in Earthquake Predictions
- ❖ Regional Conference on Redefining Diversity and Dynamics of Natural Resource Management
- ❖ Regional Forum on Climate Change
- ❖ Green Energy for Sustainable Development
- ❖ Innovation in Food Ingredients and Food Safety
- ❖ Gender Studies in Aquaculture & Fisheries : Expanding the Horizons
- ❖ China's Belt and Road Initiative – A Global Game Changer
- ❖ International Workshop on Disaster Resilience and Business Continuity Planning
- ❖ Advancing University Leadership in Afghanistan
In-country Workshop for university leaders

Trainings

- ❑ Government Officials
-- Afghanistan, Bangladesh, Cambodia, Ethiopia, India, Lao PDR, Maldives, Myanmar, Nepal, Sri Lanka, Timor Leste and others
- ❑ State-owned Enterprises
-- Power Grid Company of Bangladesh, Lahore Electricity Company of Pakistan, Bhutan Power Corporation, Nepal Telecom and others
- ❑ Private Sectors
-- Standard Chartered Bank Limited, Commercial Bank, Bangkok Corporation and others
- ❑ Others
-- Kyushu University, Ecole Polytechnique Federale de Lausanne, UNEP, UNFCCC and others

Going Forward: Complementary Collaboration



Energy

Food

Climate Change

Water

Environment

Finance

Disaster Management

Agriculture & Aquaculture

Going Forward: Centers of Excellence

1

AIT Entrepreneurship Center

2

AIT Artificial Intelligence Center

3

AIT Smart Cities Research Center

4

AIT Belt & Road Research Center

5

AIT Center of Technology Impact on Global Development



Thank You!

