

GEO-feed for road safety

Nakorn Indra-Payoong

CityXense, Burapha University

nakorn.ii@gmail.com

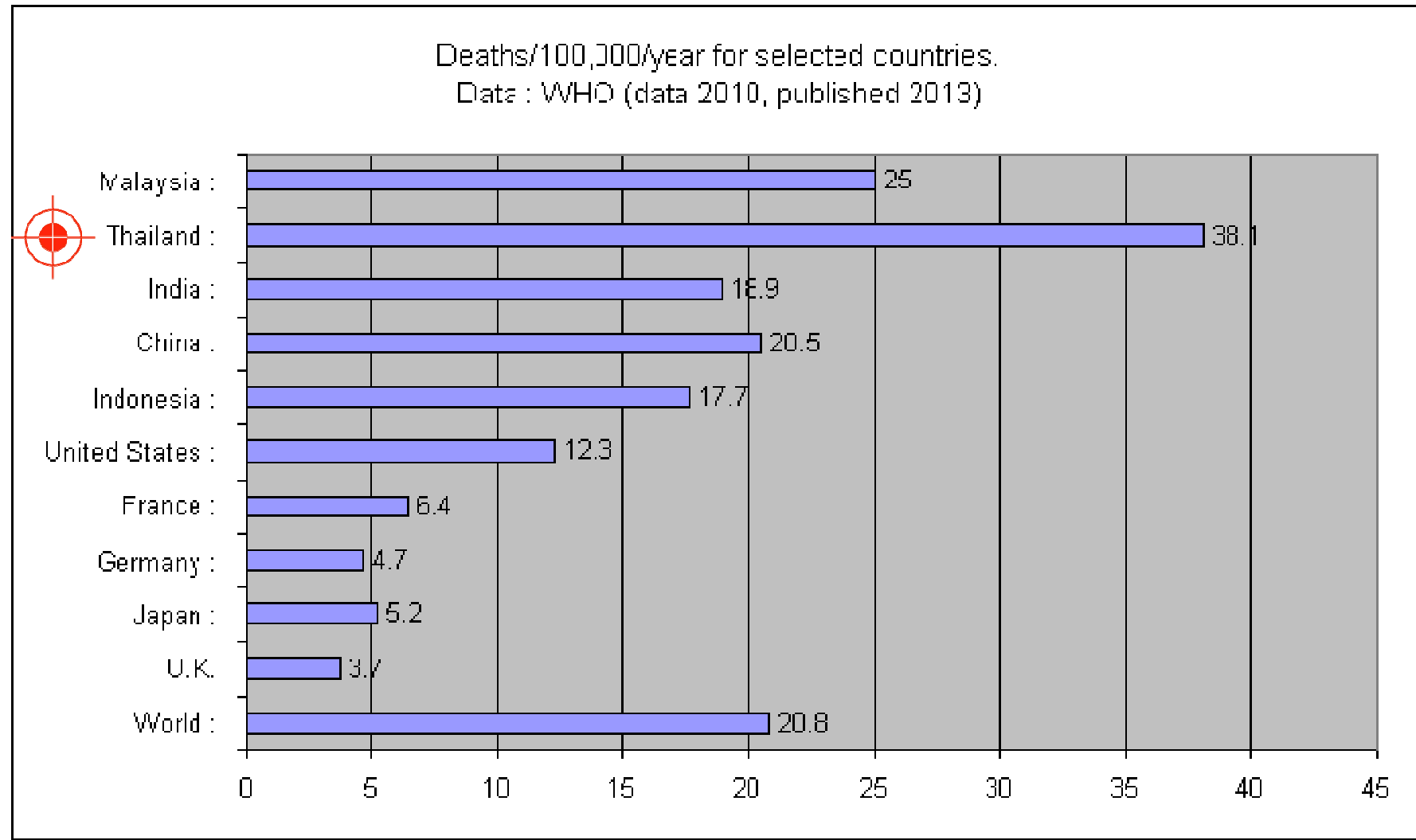


Outline

- Road safety
- Geofeed and radio wakeup
- GINSocial
- Device-to-device



Road accidents



GeoRSS feed



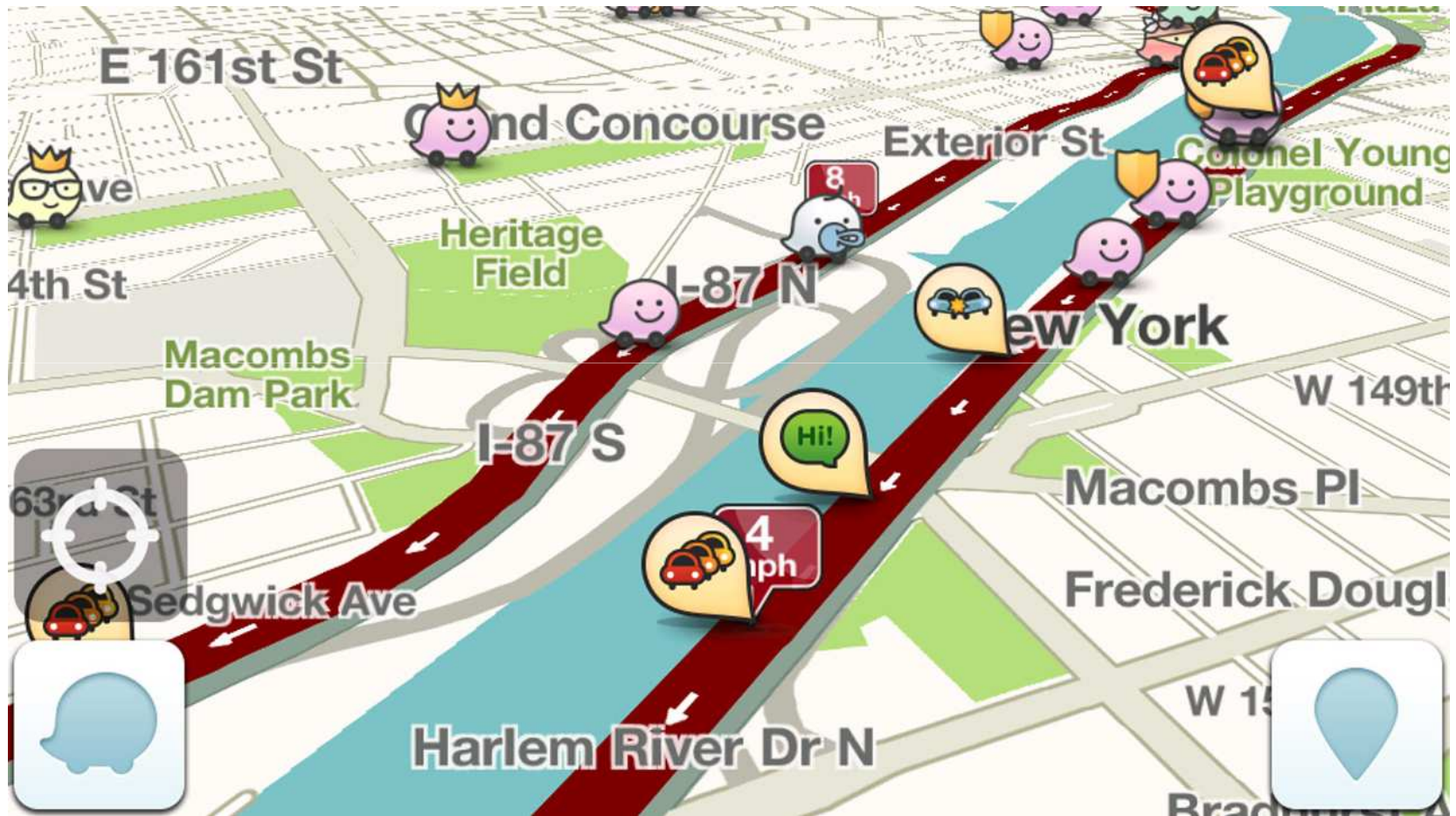
Traffic rerouting



CitySense

Map based community

Outsmarting traffic, together



(Waze, 2014)

V2X: the connected car



(Roger Corporation Blog, 2013)

CityXense

VMS

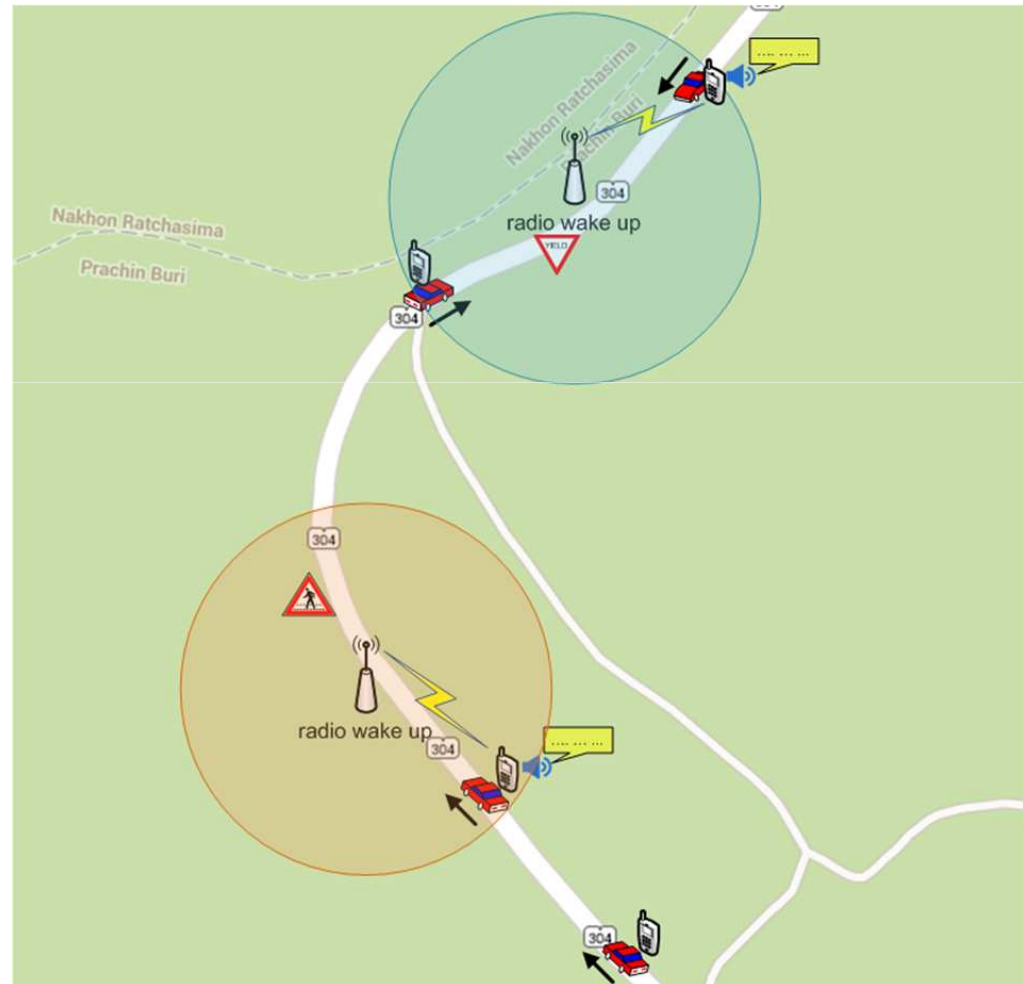


Speed advisor



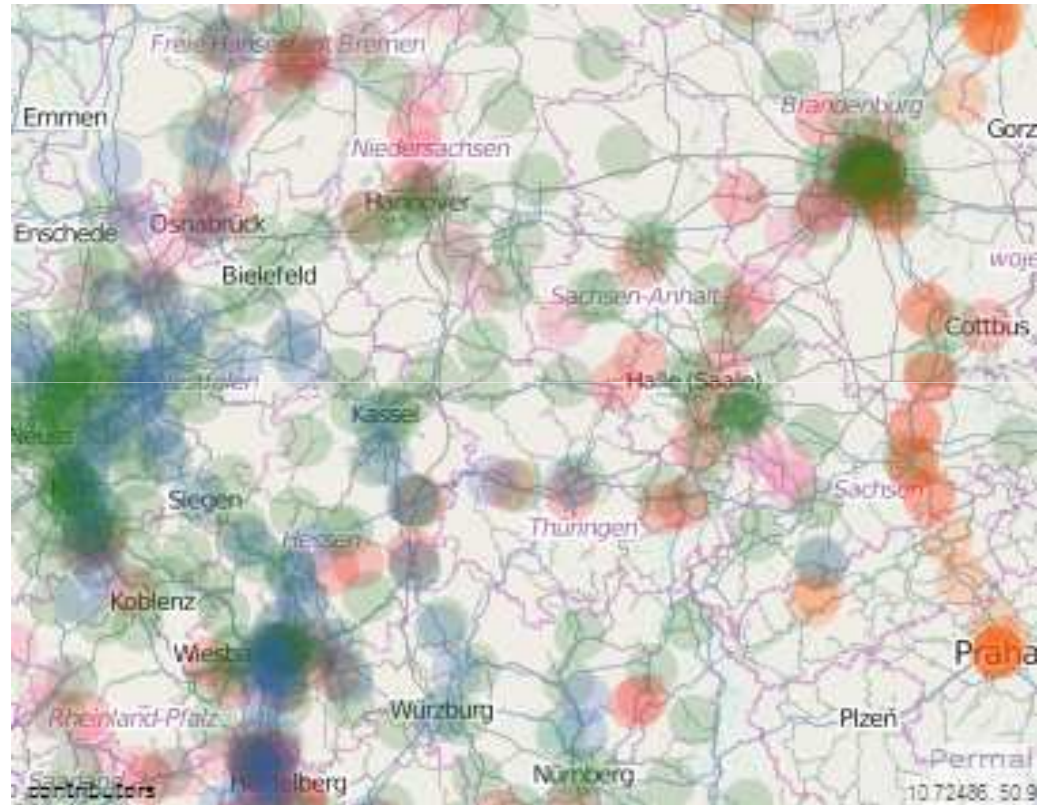
Geofeed concept

- User spatially notified
- Static / dynamic information
- GPS always off
- Radio wake up
- Text to speech



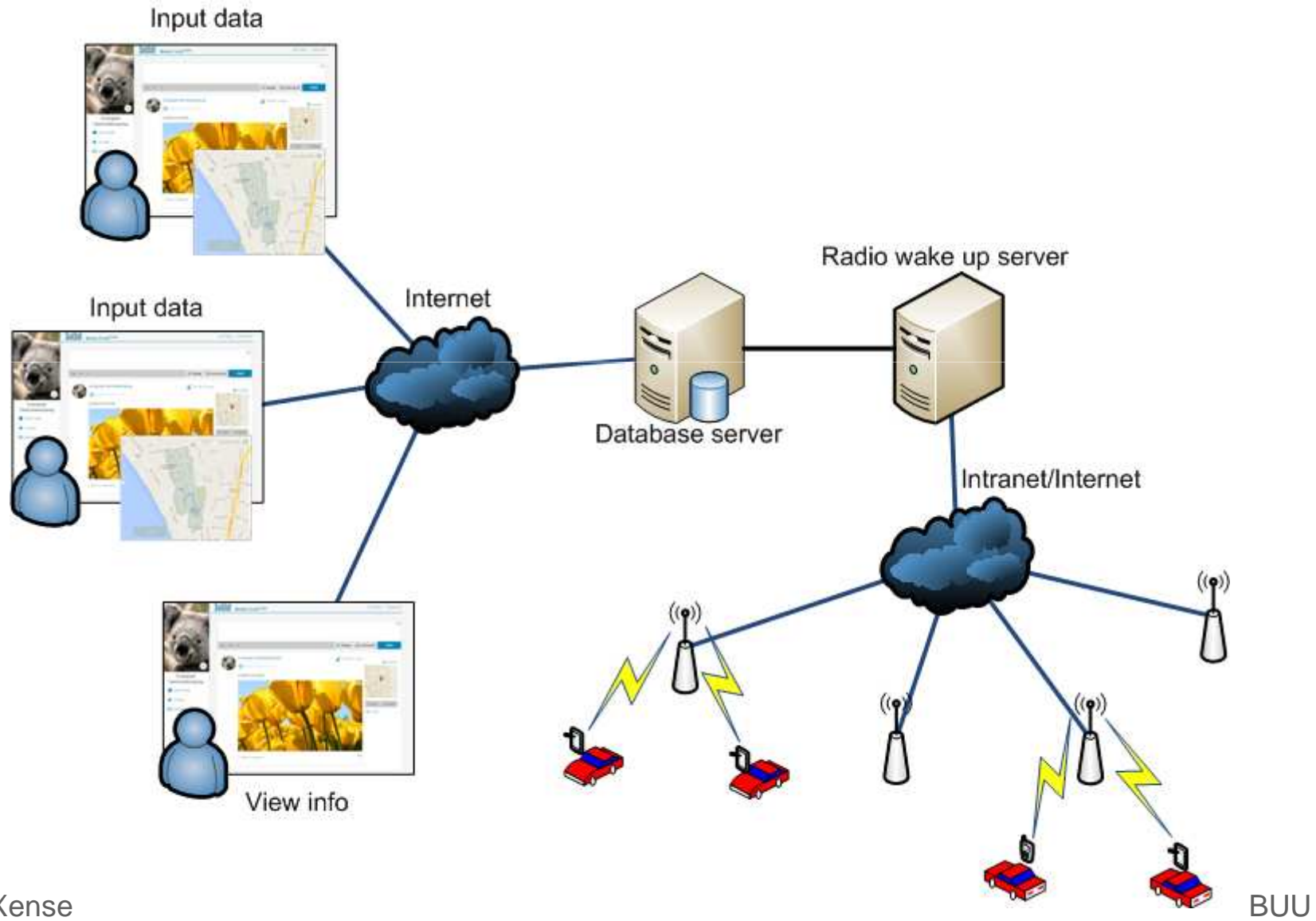
Radio map

- Cell-ID / MNC / MCC / LAC
- Geo-processing for directions
- Vehicle speed / classification



(OpenCellID, 2014)

Geofeed architecture



GINSocial

Social Geo Feed Alpha SETTING | SIGN OUT

กรมทางหลวง

Nakorn IP

- News Feed
- Group Feed
- Manage Post
- Edit Area
- Report
- Geo Feed

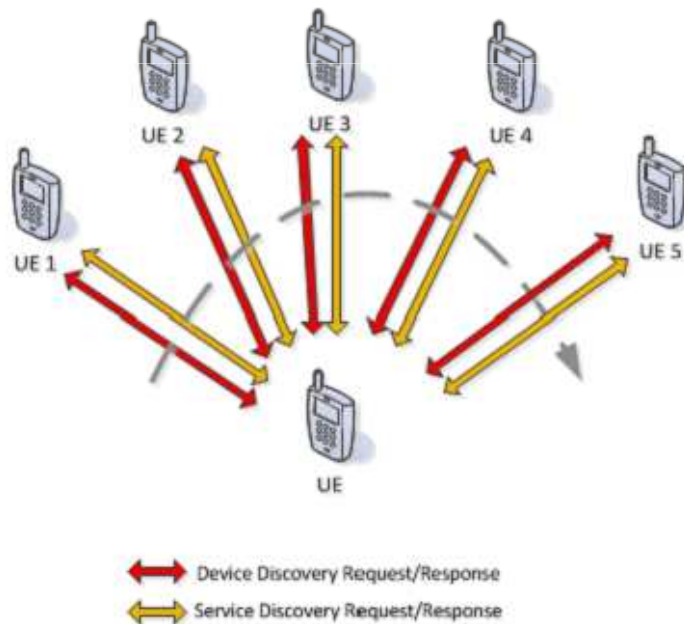
ข้างหน้าทางชำรุด และมีหลุมขนาดใหญ่ โปรดขับขี่ด้วยความระมัดระวัง !

Time 30/03/2014 17:00 - 18:00 30/03/2014 **POST**

Device to device communication

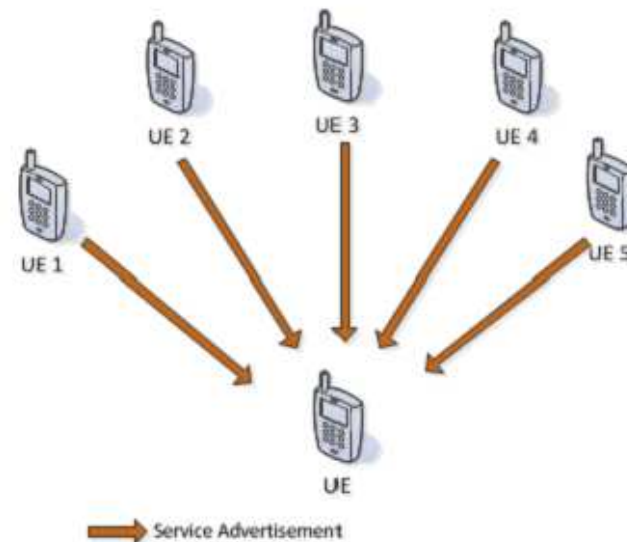
Wi-Fi Direct Discovery

- **Two step asynchronous message based discovery**
 - WFD Device exchanges device discovery request response messages followed by service discovery with every WFD in range

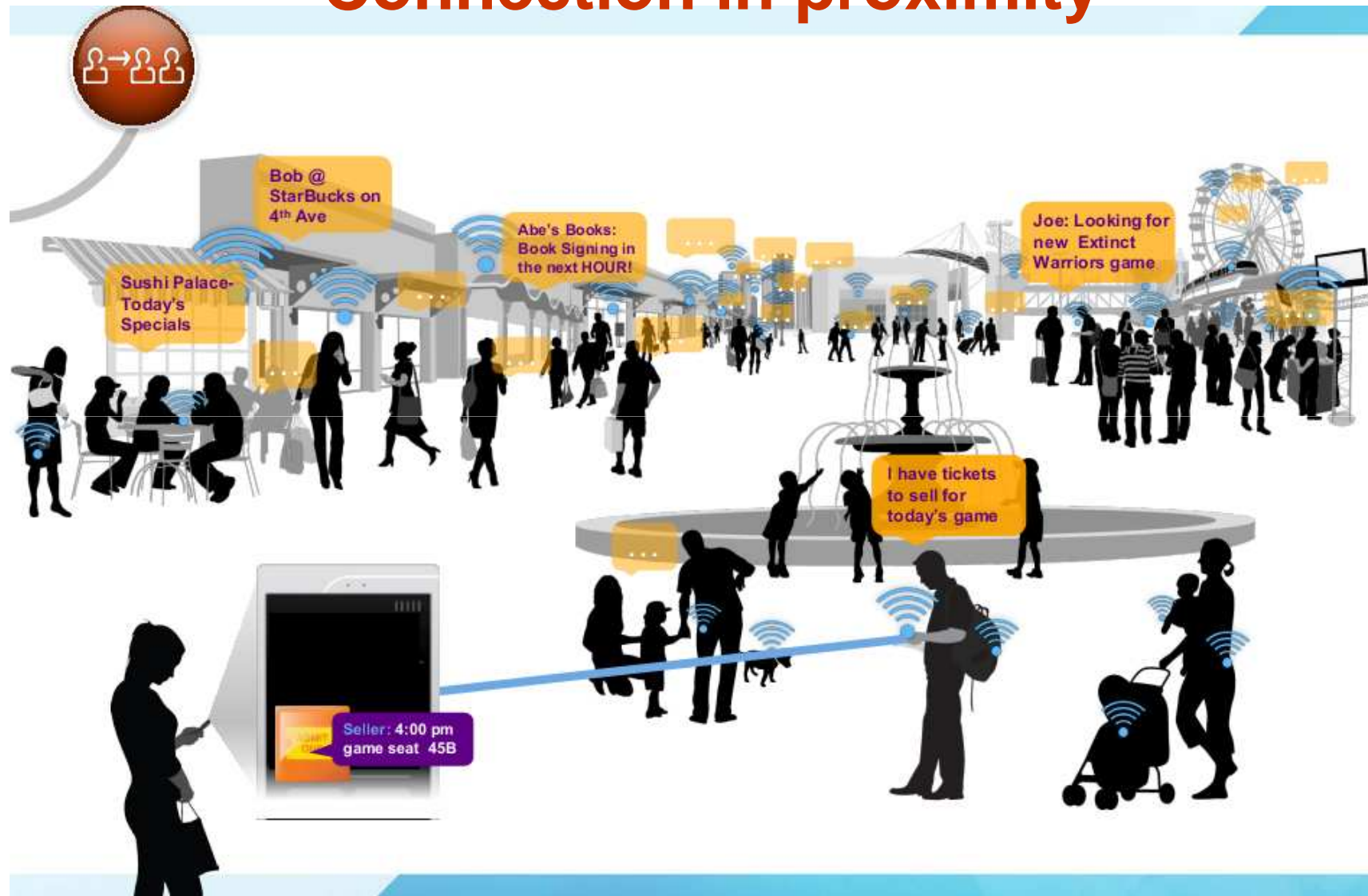


LTE Direct Discovery

- **Devices broadcast their services at physical layer using 128 bits**
- **Devices wakeup periodically synchronously to discover all devices within range**



Connection in proximity



Thank You

